



STAUFFER RANCHES

Reputation Brand ... Family Owned ... Modern Genetics

TWO YEAR OLD BLACK ANGUS BULL SALE

THURSDAY • 1 pm
FEBRUARY 9²⁰¹⁷

FORT MACLEOD AUCTION
FORT MACLEOD, ALBERTA

Welcome to Stauffer



Every bull in this sale carries the Rafter S brand and is bred for consistency as well as uniformity. Generations of proven genetics are bred into each pedigree.

The bulls in this offering will meet the high expectations of body length, hair, performance and maternal presence. When you read through the pedigrees on the bulls, many are replicated through disciplined breeding of proven sires continually stacked on one another. This consistency you will get through our program of breeding multiple generations of strong genetics.



Ranches Bull Sale!

Bred & Owned
2 Year Old Black Angus Bull Sale

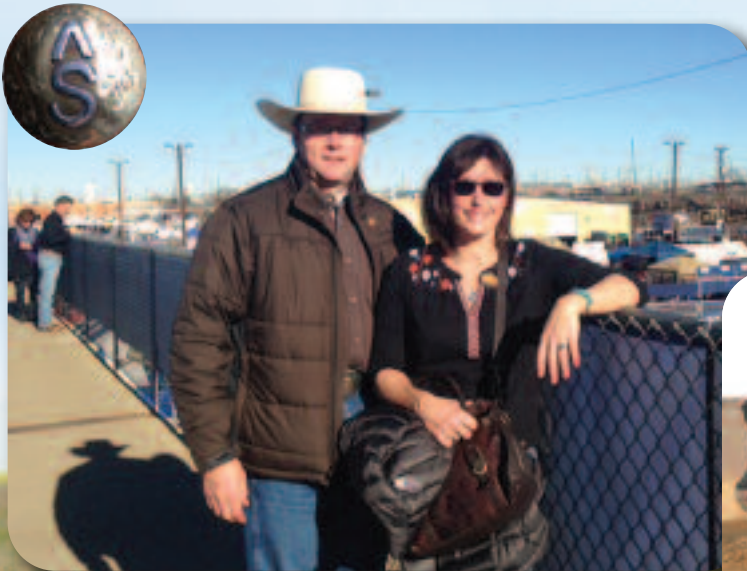
Thursday • FEBRUARY 9, 2017

1:00 p.m. (MST) - Fort Macleod Auction (Fort Macleod, AB)

• Sale Day Phones •

(403) 627-8229 (Stacey's Cell)

S.A.L.E. - (403) 627-7776



85 BULLS ON OFFER



- All bulls BYD Tested Free
- All bulls sell in Catalogue Order
- All bulls have been semen evaluated by Schunicht Veterinary Services Ltd. (Strathmore, Alberta)

-
- Ranch Staff •
 - Jeff High
 - Lane Crawford
 - Ben Puch
 - Haying & Harvest •
 - Cal Olsen
 - Stephen Hochstein
 - Cord Delinte
 - Marie-Helene Hochstein

• Sale Staff •

- Auctioneer - Brent Carey - 403-650-9028
- Ringman - Justin Keeley - 403-627-6534
- Ringman - Nate Marin - 306-869-7130
- Ringman - Bryon Wolters 780-581-7711
- S.A.L.E. - Allen Lively - 403-627-7776

STAUFFER RANCHES

Office: 403-627-2190

Stacey Cell: 403-627-8229 Email: stacey@staufferranches.com

Welcome to our Bull Sale!



(left to right) CW, Lachlan, Ellie Kate, Merrick, Michel & Stacey

It is with a great sense of pride that we open our genetics from our ranch to yours. Our business has always been as much a people business as it is a cattle business. The great friendships we've made is what makes our agricultural life style very rewarding to be part of.

Whether you come to purchase a herdsire for the first time or are a repeat customer for multiple bulls, we definitely have a tremendous set of bulls on offer. Time and time again the nicest compliments we receive are how consistent our bulls are from pen to pen from one end to the other.

Over the years of breeding bulls of value, we have consistently stacked generations of the type of cattle that strive to do well on our ranch. We very much appreciate the comments of many astute cattlemen to continue our breeding program as is because it's working for them.

This is a very stout set of bulls we offer to you on February 9, 2017, with performance, maternal and calving ease.

We also invite you to take note of a sale feature, "Working Dogs for Sale" by auction immediately following the bull sale (see inside back cover for info.)

Please join us on February 9th to assess our offering and compliment your own breeding program.

We look forward to seeing you then!

Stacey & Michel
Merrick, †Kehler,
Ellie Kate, Coulson,
& Lachlan



Schedule of Events

WEDNESDAY (February 8th)

Arrival of bulls at Sale Site for viewing

THURSDAY (February 9th)

Sale Offering available for viewing from first light right up to Sale time at 1:00 p.m. (MST)

8:00 AM Breakfast served until 11:00 AM

1:00 PM SALE COMMENCES

IMMEDIATELY FOLLOWING THE SALE -

Please join us for our **Prime Angus Beef Social** compliments of our ranch.

FRIDAY & SATURDAY (February 10 & 11th)

DELIVERY OF SALE BULLS

Stauffer Ranches will commence with delivery of any remaining bulls to your ranch.

We certainly appreciate those valued customers who bring their own trailer to assist in placing the bulls to their new homes as time is a short commodity at the Southern Alberta Livestock Exchange!

Sale Site

Sale Site: FORT MACLEOD AUCTION (Southern Alberta Livestock Exchange)

Junction of Hwy. #2 & Hwy. #3

Sale Date: FEBRUARY 9, 2017

Thursday • 1:00 P.M.





Herd Bulls

In our program, we feel it to be very important to run our herd bulls with a large group of cows. We do no E.T. work and have done very limited A.I. work.

We are committed to a breeding program of a very few sires. We place a priority on our herd bulls walking the pastures and showing that necessary breeding drive to sire many offspring.

We have five main groups on offer -

Rush Lake34 bulls
Angus Valley 1867 11 bulls
LFE BA Lewis 323A..... 12 bulls

SAR Monarch 94Y.....8 bulls
Hesston }18 bulls
Density }
Escalade }

A



A

WIWA CREEK RUSH LAKE 71'12

Rush Lake has definitely set the bar to a high level here at Stauffer Ranches!

The pride in which he carried himself in the breeding field is also being stamped on his progeny – the style, hair coat, muscle and lots of maternal strength is very evident.

We now have his first daughters weaning off some of our heaviest calves. This spring we'll see 60 daughters of Rush Lake calving and another 30 replacement heifers being bred.

His influence will have an impact for many generations to come.

Now owned with Spivey Farms, Illinois.

Being able to travel and settle a lot of cows naturally is a benefit to our program as well as to our customers'.

Herd Bulls



B

SAV ANGUS VALLEY 1867

Angus Valley was used extensively on virgin heifers. A predictable low birth weight, easy calving sire along with style and maternal value. Use his sons on offer with confidence for easy calving of your first time heifers.

It is rewarding to note the excellent performance these cattle have come weaning time.

11 SONS ON OFFER



C

LFE BA LEWIS 323A

A high selling Harvester son from Lewis Farms that packs a lot of performance on his bulls as is evident in his twelve sons on offer.

His sons should go out and breed as well and as consistently as he did and return lots of maternal strength in his females.

12 SONS ON OFFER

D

SAR MONARCH 94Y

94Y was a high seller at Stauffer Ranches. He comes from the Monarch line of cattle and offers good useable traits, not extreme in any way.

8 SONS ON OFFER



Lot #92

Pen #1



92

MALE SAR 92C MARCH 27 2015 #1877539

RAFTER S RUSH LAKE 92C

BW: 92 lbs. AOD: 7 205D Wt: 782 lbs.

SOO LINE MOTIVE 9016
WIWA CREEK RUSH LAKE 71'12 (1663194)
WIWA CREEK PRIDE 63'10

T Z PRIDE 8P
SAR LADY PRIDE 29U (1445542)
SAR LADY PRIDE 98J

HF KODIAK 5RAMF CAF OHF NHF MAF DDF
TLA BEAUTY 5R
WIWA CREEK FULLBACK 19'07
WIWA CREEK PRIDE 94'06

SITZ ALLIANCE 6595 DMF AMF CAF OHF NHF
TZ LACEY 8L
SFL BORDER 18G
DOUBLE J LADY PRIDE 119F

2

MALE SAR 2C MARCH 02 2015 #1877475

RAFTER S RUSH LAKE 2C

BW: 82 lbs. AOD: 6 205D Wt: 712 lbs.

SOO LINE MOTIVE 9016
WIWA CREEK RUSH LAKE 71'12 (1663194)
WIWA CREEK PRIDE 63'10

SAR WATERTON 2R
SAR RUTH 38W (1503084)
SAR RUTH 9M

HF KODIAK 5R AMF CAF OHF NHF MAF DDF
TLA BEAUTY 5R
WIWA CREEK FULLBACK 19'07
WIWA CREEK PRIDE 94'06

R&J ATLAS 3201
SFL ROSEBUD LADY 4E
DMM DYNASTY 03G
SAR QUEEN RUTH 15K

These Rush Lake Sons are as solid as they get as a group!
They are very consistent in their type and will sire lots of performance and maternal as well.

The opportunity to purchase this many half brothers sired by Rush Lake is

Only Available at Stauffer Ranches!



82

MALE SAR 82C MARCH 25 2015 #1877483

RAFTER S RUSH LAKE 82C

BW: 80 lbs. AOD: 6 205D Wt: 752 lbs.

SOO LINE MOTIVE 9016
WIWA CREEK RUSH LAKE 71'12 (1663194)
WIWA CREEK PRIDE 63'10

HF KODIAK 5RAMF CAF OHF NHF MAF DDF
TLA BEAUTY 5R
WIWA CREEK FULLBACK 19'07
WIWA CREEK PRIDE 94'06

SAR SILVER PRIDE 77S
SAR LASS 67W (1526280)
ABERLYNN LASS 10'93

T Z PRIDE 8P
SAR MISS MORRISON 34N
WIWA CREEK ATLAS 13'90
ABERLYNN LASS 38'91



Pen #1

Lot #82

17

MALE SAR 17C MARCH 12 2015 #1877502

RAFTER S RUSH LAKE 17C

BW: 86 lbs. AOD: 5 205D Wt: 718 lbs.

SOO LINE MOTIVE 9016
WIWA CREEK RUSH LAKE 71'12 (1663194)
WIWA CREEK PRIDE 63'10

HF KODIAK 5RAMF CAF OHF NHF MAF DDF
TLA BEAUTY 5R
WIWA CREEK FULLBACK 19'07
WIWA CREEK PRIDE 94'06

SAR WATERTON 2R
SAR LASS 35X (1562605)
SAR LASS 162P

R&J ATLAS 3201
SFL ROSEBUD LADY 4E
HI DIAMOND BLACK CLASS 2031
ABERLYNN LASS 10'93



Lot #10

10

MALE SAR 10C MARCH 11 2015 #1877462

RAFTER S RUSH LAKE 10C

BW: 91 lbs. AOD: 4 205D Wt: 762 lbs.

SOO LINE MOTIVE 9016
WIWA CREEK RUSH LAKE 71'12 (1663194)
WIWA CREEK PRIDE 63'10

HF KODIAK 5RAMF CAF OHF NHF MAF DDF
TLA BEAUTY 5R
WIWA CREEK FULLBACK 19'07
WIWA CREEK PRIDE 94'06

WIWA CREEK MONARCH 6'08
SAR RUTH 62Y (1631778)
SAR RUTH 9M

SWITZ MONARCH 7R
WIWA CREEK EVERGREEN 37L 38'04
DMM DYNASTY 03G
SAR QUEEN RUTH 15K



Lot #132

27

MALE SAR 27C MARCH 15 2015 #1877468

RAFTER S RUSH LAKE 27C

BW: 90 lbs. AOD: 4 205D Wt: 715 lbs.

SOO LINE MOTIVE 9016
WIWA CREEK RUSH LAKE 71'12 (1663194)
WIWA CREEK PRIDE 63'10

HF KODIAK 5RAMF CAF OHF NHF MAF DDF
TLA BEAUTY 5R
WIWA CREEK FULLBACK 19'07
WIWA CREEK PRIDE 94'06

SAR SILVER PRIDE 77S
SAR PRINCESS 95Y (1631818)
SAR PRINCESS 60T

T Z PRIDE 8P
SAR MISS MORRISON 34N
SAR WATERTON 2R
SAR PRINCESS 51J

132

MALE SAR 132C APRIL 02 2015 #1874423

RAFTER S RUSH LAKE 132C

BW: 94 lbs. AOD: 3 205D Wt: 770 lbs.

SOO LINE MOTIVE 9016
WIWA CREEK RUSH LAKE 71'12 (1663194)
WIWA CREEK PRIDE 63'10

HF KODIAK 5RAMF CAF OHF NHF MAF DDF
TLA BEAUTY 5R
WIWA CREEK FULLBACK 19'07
WIWA CREEK PRIDE 94'06

SOO LINE KODIAK 9084
RAFTER S LASS 110Z (1705954)
SAR LASS 67W

HF KODIAK 5RAMF CAF OHF NHF MAF DDF
DWAJO JESTRESS 3P
SAR SILVER PRIDE 77S
ABERLYNN LASS 10'93

138

MALE SAR 138C APRIL 03 2015 #1877532

RAFTER S RUSH LAKE 138C

BW: 92 lbs. AOD: 8 205D Wt: 743 lbs.

SOO LINE MOTIVE 9016
WIWA CREEK RUSH LAKE 71'12 (1663194)
WIWA CREEK PRIDE 63'10

HF KODIAK 5RAMF CAF OHF NHF MAF DDF
TLA BEAUTY 5R
WIWA CREEK FULLBACK 19'07
WIWA CREEK PRIDE 94'06

SANDY BAR CASTLEROCK 173P DDF
SAR PRINCESS 246T (1392693)
SAR PRINCESS 58P

TC ADVANTAGE AMF CAF OHF NHF DDC
SANDY BAR LASS 29M
WIWA CREEK KRUGERRAND 223'02
SAR PRINCESS 186L

Lot #29

Pen #2



29

MALE SAR 29C MARCH 15 2015 #1877495

RAFTER S RUSH LAKE 29C

BW: 92 lbs. AOD: 6 205D Wt: 788 lbs.

SOO LINE MOTIVE 9016
WIWA CREEK RUSH LAKE 71'12 (1663194)
WIWA CREEK PRIDE 63'10

HF KODIAK 5RAMF CAF OHF NHF MAF DDF
TLA BEAUTY 5R
WIWA CREEK FULLBACK 19'07
WIWA CREEK PRIDE 94'06

SAR SILVER PRIDE 77S
SAR GEORGINA 236W (1503283)
SAR GEORGINA 70H

T Z PRIDE 8P
SAR MISS MORRISON 34N
BELVIN BOARDWALK 11'92
ABERLYNN GEORGINA 26'93

44

MALE SAR 44C MARCH 18 2015 #1877487

RAFTER S RUSH LAKE 44C

BW: 89 lbs. AOD: 6 205D Wt: 771 lbs.

SOO LINE MOTIVE 9016
WIWA CREEK RUSH LAKE 71'12 (1663194)
WIWA CREEK PRIDE 63'10

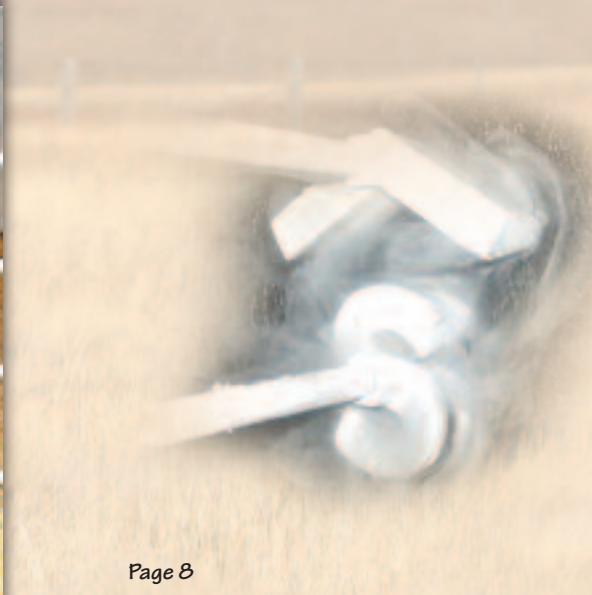
HF KODIAK 5R AMF CAF OHF NHF MAF DDF
TLA BEAUTY 5R
WIWA CREEK FULLBACK 19'07
WIWA CREEK PRIDE 94'06

S A V 004 DENSITY 4336 AMF
BROOKMORE BELLA 79W (1516134)
BROOKMORE BELLA 115N

S A V 8180 TRAVELER 004 DMF DWF AMF CAF
S A V MAY 7238 CAF DDF
S A F 598 BANDO 5175 AMF CAC DDF
BROOKMORE BELLA 119H



Lot #44



160

MALE SAR 160C APRIL 08 2015 #1877496

RAFTER S RUSH LAKE 160C

BW: 84 lbs. AOD: 4 205D Wt: 807 lbs.

SOO LINE MOTIVE 9016
WIWA CREEK RUSH LAKE 71'12 (1663194)
WIWA CREEK PRIDE 63'10

HF KODIAK 5RAMF CAF OHF NHF MAF DDF
TLA BEAUTY 5R
WIWA CREEK FULLBACK 19'07
WIWA CREEK PRIDE 94'06

SAR WATERTON 69U
SAR DELLA 352Y (1631928)
SAR DELLA 179M

SAR WATERTON 2R
SAR QUEEN MOTHER 16P
SAR STOCKMAN 90K
SFL MISS DELLA 2G

16

MALE SAR 16C MARCH 12 2015 #1877525

RAFTER S RUSH LAKE 16C

BW: 79 lbs. AOD: 5 205D Wt: 778 lbs.

SOO LINE MOTIVE 9016
WIWA CREEK RUSH LAKE 71'12 (1663194)
WIWA CREEK PRIDE 63'10

HF KODIAK 5RAMF CAF OHF NHF MAF DDF
TLA BEAUTY 5R
WIWA CREEK FULLBACK 19'07
WIWA CREEK PRIDE 94'06

SAR WATERTON 69U
SAR BLACKCAP MARY 323X (1562628)
SAR BLACKCAP MARY 133P

SAR WATERTON 2R
SAR QUEEN MOTHER 16P
HI DIAMOND BLACK CLASS 2031
SAR BLACKCAP MARY 120K

175

MALE SAR 175C APRIL 11 2015 #1877494

RAFTER S 360 175C

BW: 86 lbs. AOD: 4 205D Wt: 769 lbs.

SOO LINE MOTIVE 9016
WIWA CREEK RUSH LAKE 71'12 (1663194)
WIWA CREEK PRIDE 63'10

HF KODIAK 5RAMF CAF OHF NHF MAF DDF
TLA BEAUTY 5R
WIWA CREEK FULLBACK 19'07
WIWA CREEK PRIDE 94'06

SAR SILVER PRIDE 168W
SAR MATILDA 341Y (1658215)
SAR MATILDA 47S

SAR SILVER PRIDE 77S
SAR EPPONIA 3P
F-R 662 LAD 4011
SAR MATILDA 141M

31

MALE SAR 31C MARCH 16 2015 #1877508

RAFTER S RUSH LAKE 31C

BW: 88 lbs. AOD: 8 205D Wt: 694 lbs.

SOO LINE MOTIVE 9016
WIWA CREEK RUSH LAKE 71'12 (1663194)
WIWA CREEK PRIDE 63'10

HF KODIAK 5RAMF CAF OHF NHF MAF DDF
TLA BEAUTY 5R
WIWA CREEK FULLBACK 19'07
WIWA CREEK PRIDE 94'06

SAR WATERTON 2R
SAR ROSEBUD 3T (1392734)
SAR ROSEBUD 16R

R&J ATLAS 3201
SFL ROSEBUD LADY 4E
ARDA HEADS UP 229N
SAR ROSEBUD 25H

67

MALE SAR 67C MARCH 22 2015 #1874413

RAFTER S RUSH LAKE 67C

BW: 87 lbs. AOD: 8 205D Wt: 784 lbs.

SOO LINE MOTIVE 9016
WIWA CREEK RUSH LAKE 71'12 (1663194)
WIWA CREEK PRIDE 63'10

HF KODIAK 5RAMF CAF OHF NHF MAF DDF
TLA BEAUTY 5R
WIWA CREEK FULLBACK 19'07
WIWA CREEK PRIDE 94'06

SAR WATERTON 2R
SAR MORRISON 307T (1392770)
SAR MORRISON 168R

R&J ATLAS 3201
SFL ROSEBUD LADY 4E
SFL FORT ROCK 11F
SAR MORRISON 75M

95

MALE SAR 95C MARCH 27 2015 #1877472

RAFTER S RUSH LAKE 95C

BW: 95 lbs. AOD: 4 205D Wt: 798 lbs.

SOO LINE MOTIVE 9016
WIWA CREEK RUSH LAKE 71'12 (1663194)
WIWA CREEK PRIDE 63'10

HF KODIAK 5RAMF CAF OHF NHF MAF DDF
TLA BEAUTY 5R
WIWA CREEK FULLBACK 19'07
WIWA CREEK PRIDE 94'06

WIWA CREEK MONARCH 6'08
SAR BLACKBIRD 111Y (1631844)
SAR BLACKBIRD 91R

SWITZ MONARCH 7R
WIWA CREEK EVERGREEN 37L 38'04
WIWA CREEK KRUGERRAND 223'02
SAR BLACKBIRD 92H

Pen #2

Lot #160



Lot #175



Lot #67



Lot #28

Pen #3



28

MALE SAR 28C MARCH 15 2015 #1877481

RAFTER S RUSH LAKE 28C

BW: 80 lbs. AOD: 6 205D Wt: 722 lbs.

SOO LINE MOTIVE 9016
WIWA CREEK RUSH LAKE 71'12 (1663194)
WIWA CREEK PRIDE 63'10

T Z PRIDE 8P
SAR BLACKBIRD 51W (1503096)
SAR BLACKBIRD 162N

HF KODIAK 5R AMF CAF OHF NHF MAF DDF
TLA BEAUTY 5R
WIWA CREEK FULLBACK 19'07
WIWA CREEK PRIDE 94'06

SITZ ALLIANCE 6595 DMF AMF CAF OHF NHF DDF
TZ LACEY 8L
SAR BORDER 62L
SAR BLACKBIRD 20L

123

MALE SAR 123C APRIL 01 2015 #1874421

RAFTER S RUSH LAKE 123C

BW: 84 lbs. AOD: 4 205D Wt: 750 lbs.

SOO LINE MOTIVE 9016
WIWA CREEK RUSH LAKE 71'12 (1663194)
WIWA CREEK PRIDE 63'10

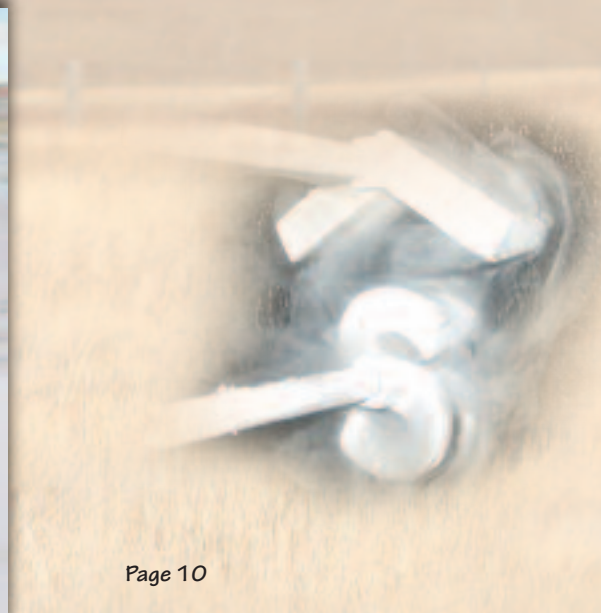
SOO LINE KODIAK 9084
SAR FLORESS 116Y (1631855)
SAR FLORESS 152W

HF KODIAK 5R AMF CAF OHF NHF MAF DDF
TLA BEAUTY 5R
WIWA CREEK FULLBACK 19'07
WIWA CREEK PRIDE 94'06

HF KODIAK 5R AMF CAF OHF NHF MAF DDF
DWAJO JESTRESS 3P
SAR SILVER PRIDE 77S
SAR FLORESS 21N



Rush Lake - Sire of
Pens #1 - #3 & Pen #6



162

MALE SAR 162C APRIL 08 2015 #1877470

RAFTER S RUSH LAKE 162C

BW: 84 lbs. AOD: 11 205D Wt: 766 lbs.

SOO LINE MOTIVE 9016
WIWA CREEK RUSH LAKE 71'12 (1663194)
WIWA CREEK PRIDE 63'10

HF KODIAK 5RAMF CAF OHF NHF MAF DDF
TLA BEAUTY 5R
WIWA CREEK FULLBACK 19'07
WIWA CREEK PRIDE 94'06

SAR BORDER 62L
SAR BUXOM 43P (1245791)
SAR BUXOM 172M

SAR JEWEL 62J
WIWA CREEK PRIDE 71G 83'99
WIWA CREEK STOCKMAN 25'95
DOUBLE FOUR MISS BUXOM 345X



Pen #3

Lot #162

260

MALE SAR 260C APRIL 28 2015 #1874464

RAFTER S RUSH LAKE 260C

BW: 87 lbs. AOD: 12 205D Wt: 765 lbs.

SOO LINE MOTIVE 9016
WIWA CREEK RUSH LAKE 71'12 (1663194)
WIWA CREEK PRIDE 63'10

HF KODIAK 5RAMF CAF OHF NHF MAF DDF
TLA BEAUTY 5R
WIWA CREEK FULLBACK 19'07
WIWA CREEK PRIDE 94'06

SITZ ALLIANCE 6595 DMF AMF CAF OHF NHF DDF
SAR ROSEBUD 18N (1208571)
SFL ROSEBUD LADY 4E

SITZ TRAVELER 8180 AMF CAF OHF NHF DDF
SITZ BARBARAMERE JET 2698
G D A R RAINMAKER 340
WICKLOW MISS ROSEBUD 22C



Lot #11

11

MALE SAR 11C MARCH 11 2015 #1877504

RAFTER S RUSH LAKE 11C

BW: 84 lbs. AOD: 9 205D Wt: 654 lbs.

SOO LINE MOTIVE 9016
WIWA CREEK RUSH LAKE 71'12 (1663194)
WIWA CREEK PRIDE 63'10

HF KODIAK 5RAMF CAF OHF NHF MAF DDF
TLA BEAUTY 5R
WIWA CREEK FULLBACK 19'07
WIWA CREEK PRIDE 94'06

SFL FORT ROCK 11F
SAR BEAUTY 72S (1339055)
SAR BEAUTY 67L

BELVIN BOARDWALK 11'92
WICKLOW MISS ROSEBUD 22C
G D A R ROLLS ROYCE 203
SAR BEAUTY 68J



Lot #183

111

MALE SAR 111C MARCH 30 2015 #1877486

RAFTER S RUSH LAKE 111C

BW: 85 lbs. AOD: 10 205D Wt: 781 lbs.

SOO LINE MOTIVE 9016
WIWA CREEK RUSH LAKE 71'12 (1663194)
WIWA CREEK PRIDE 63'10

HF KODIAK 5RAMF CAF OHF NHF MAF DDF
TLA BEAUTY 5R
WIWA CREEK FULLBACK 19'07
WIWA CREEK PRIDE 94'06

SFL FORT ROCK 11F
SAR COUNTESS 139R (1280396)
SAR COUNTESS 23K

BELVIN BOARDWALK 11'92
WICKLOW MISS ROSEBUD 22C
SAR HERDBUILDER 50H
SAR COUNTESS 61H

183

MALE SAR 183C APRIL 13 2015 #1877520

RAFTER S RUSH LAKE 183C

BW: 86 lbs. AOD: 5 205D Wt: 765 lbs.

SOO LINE MOTIVE 9016
WIWA CREEK RUSH LAKE 71'12 (1663194)
WIWA CREEK PRIDE 63'10

HF KODIAK 5RAMF CAF OHF NHF MAF DDF
TLA BEAUTY 5R
WIWA CREEK FULLBACK 19'07
WIWA CREEK PRIDE 94'06

SAR WATERTON 14U
SAR BURGESS 306X (1562586)
SAR BURGESS 207R

SAR WATERTON 2R
SAR TIB ANNIE K 93S
WIWA CREEK KRUGERRAND 211'02
SAR BURGESS 59J

93

MALE SAR 93C MARCH 27 2015 #1877484

RAFTER S RUSH LAKE 93C

BW: 94 lbs. AOD: 4 205D Wt: 754 lbs.

SOO LINE MOTIVE 9016
WIWA CREEK RUSH LAKE 71'12 (1663194)
WIWA CREEK PRIDE 63'10

HF KODIAK 5RAMF CAF OHF NHF MAF DDF
TLA BEAUTY 5R
WIWA CREEK FULLBACK 19'07
WIWA CREEK PRIDE 94'06

SAR RANGER 60U
SAR LASS 152Y (1631893)
SAR LASS 124M

SAR WATERTON 2R
SAR MISS MORRISON 34N
SAR KODIAK 18K
DOUBLE J LASS 218F

Lot #71

Pen #4 - Heifer Bulls!



71

MALE SAR 71C MARCH 23 2015 #1879425

RAFTER S VALLEY 71C

BW: 83 lbs. AOD: 2 205D Wt: 739 lbs.

S A V IRON MOUNTAIN 8066 NHF MAF DDF
S A V ANGUS VALLEY 1867 AMF (1719214)
S A V MAY 2397 CAF

TC GRIDIRON 258 AMF CAF OHF NHF DDF
S A V MADAME PRIDE 3249 CAF DDF
S A F 598 BANDO 5175 AMF CAC DDF
S A V MAY 7238 CAF DDF

S A V 004 DENSITY 4336 AMF CAF OHF NHF
RAFTER S JESTRESS 49A (1763597)
SAR JESTRESS 48Y

S A V 8180 TRAVELER 004 DMF DWF AMF CAF
S A V MAY 7238 CAF DDF
SOO LINE KODIAK 9084
SAR JESTRESS 84W

52

MALE SAR 52C MARCH 19 2015 #1879422

RAFTER S VALLEY 52C

BW: 82 lbs. AOD: 2 205D Wt: 758 lbs.

S A V IRON MOUNTAIN 8066 NHF MAF DDF
S A V ANGUS VALLEY 1867 AMF (1719214)
S A V MAY 2397 CAF

TC GRIDIRON 258 AMF CAF OHF NHF DDF
S A V MADAME PRIDE 3249 CAF DDF
S A F 598 BANDO 5175 AMF CAC DDF
S A V MAY 7238 CAF DDF

S A V 004 DENSITY 4336 AMF CAF OHF
RAFTER S MISS MORRISON 39A (1769216)
SAR MISS MORRISON 110Y

S A V 8180 TRAVELER 004 DMF DWF AMF CAF
S A V MAY 7238 CAF DDF
SOO LINE KODIAK 9084
SAR MISS MORRISON 34N



Lot #52

PEN 4 – HEIFER BULLS!

This is an excellent pen of bulls for service on virgin heifers. The Angus Valley calves are born easily, have lots of vigor but, most importantly have a performance come weaning time.

Note the 205 Day Weights are very comparable to the rest of the calf crop.

This is an attractive group of Calving Ease Bulls that won't disappoint!

34

MALE SAR 34C MARCH 17 2015 #1879443

RAFTER S VALLEY 34C

BW: 76 lbs. AOD: 2 205D Wt: 671 lbs.

S A V IRON MOUNTAIN 8066 NHF MAF DDF
S A V ANGUS VALLEY 1867 AMF (1719214)
S A V MAY 2397 CAF

TC GRIDIRON 258 AMF CAF OHF NHF DDF
S A V MADAME PRIDE 3249 CAF DDF
S A F 598 BANDO 5175 AMF CAC DDF
S A V MAY 7238 CAF DDF

LLB OLD POST 283Y
RAFTER S BLACKBIRD 177A (1769095)
SAR BLACKBIRD 162N

DOUBLE AA OLD POST BANDOLIER AMF CAF OHF
LLB EULIMA 104K
SAR BORDER 62L
SAR BLACKBIRD 20L

25

MALE SAR 25C MARCH 14 2015 #1878847

RAFTER S VALLEY 25C

BW: 88 lbs. AOD: 2 205D Wt: 790 lbs.

S A V IRON MOUNTAIN 8066 NHF MAF DDF
S A V ANGUS VALLEY 1867 AMF (1719214)
S A V MAY 2397 CAF

TC GRIDIRON 258 AMF CAF OHF NHF DDF
S A V MADAME PRIDE 3249 CAF DDF
S A F 598 BANDO 5175 AMF CAC DDF
S A V MAY 7238 CAF DDF

ANDERSON FORT ROCK 1002
RAFTER S ROSEBUD 267A (1763722)
SAR LASS 86W

SAR FORT ROCK 91T
REMINGTON ELENA 15T
SAR WATERTON 132T
SAR BAR LASS 114T

49

MALE SAR 49C MARCH 19 2015 #1879423

RAFTER S VALLEY 49C

BW: 79 lbs. AOD: 2 205D Wt: 739 lbs.

S A V IRON MOUNTAIN 8066 NHF MAF DDF
S A V ANGUS VALLEY 1867 AMF (1719214)
S A V MAY 2397 CAF

TC GRIDIRON 258 AMF CAF OHF NHF DDF
S A V MADAME PRIDE 3249 CAF DDF
S A F 598 BANDO 5175 AMF CAC DDF
S A V MAY 7238 CAF DDF

S A V 004 DENSITY 4336 AMF CAF OHF
RAFTER S BLACKBIRD 42A (1769217)
SAR BLACKBIRD 44Y

S A V 8180 TRAVELER 004 DMF DWF AMF CAF
S A V MAY 7238 CAF DDF
SAR RANGER 60U
SAR BLACKBIRD 20L

60

MALE SAR 60C MARCH 21 2015 #1879445

RAFTER S VALLEY 60C

BW: 81 lbs. AOD: 2 205D Wt: 705 lbs.

S A V IRON MOUNTAIN 8066 NHF MAF DDF
S A V ANGUS VALLEY 1867 AMF (1719214)
S A V MAY 2397 CAF

TC GRIDIRON 258 AMF CAF OHF NHF DDF
S A V MADAME PRIDE 3249 CAF DDF
S A F 598 BANDO 5175 AMF CAC DDF
S A V MAY 7238 CAF DDF

SAR RANGER 60U
RAFTER S FLORESS 188A (1793806)
SAR FLORESS 58W

SAR WATERTON 2R
SAR MISS MORRISON 34N
SAR SILVER PRAIRIE 173S
SAR FLORESS 15T

40

MALE SAR 40C MARCH 17 2015 #1879421

RAFTER S VALLEY 40C

BW: 74 lbs. AOD: 2 205D Wt: 723 lbs.

S A V IRON MOUNTAIN 8066 NHF MAF DDF
S A V ANGUS VALLEY 1867 AMF (1719214)
S A V MAY 2397 CAF

TC GRIDIRON 258 AMF CAF OHF NHF DDF
S A V MADAME PRIDE 3249 CAF DDF
S A F 598 BANDO 5175 AMF CAC DDF
S A V MAY 7238 CAF DDF

S A V 004 DENSITY 4336 AMF CAF OHF NHF
RAFTER S LADY PRIDE 35A (1769214)
SAR LADY PRIDE 55T

S A V 8180 TRAVELER 004 DMF DWF AMF
S A V MAY 7238 CAF DDF
SANDY BAR CASTLEROCK 173P DDF
SAR LADY PRIDE 98J

36

MALE SAR 36C MARCH 17 2015 #1879440

RAFTER S VALLEY 36C

BW: 72 lbs. AOD: 2 205D Wt: 753 lbs.

S A V IRON MOUNTAIN 8066 NHF MAF DDF
S A V ANGUS VALLEY 1867 AMF (1719214)
S A V MAY 2397 CAF

TC GRIDIRON 258 AMF CAF OHF NHF DDF
S A V MADAME PRIDE 3249 CAF DDF
S A F 598 BANDO 5175 AMF CAC DDF
S A V MAY 7238 CAF DDF

SAR HESSTON 97X
RAFTER S ROSEBUD 128A (1763640)
SAR ROSEBUD 91W

HF KODIAK 5R AMF CAF OHF NHF MAF DDF
SAR GEORGINA 70H
SAR SILVER PRIDE 77S
SAR ROSEBUD 78N

Pen #4 - Heifer Bulls!

Lot #34



Lot #49



Lot #40



Lot #61

Pen #5



61

MALE SAR 61C MARCH 21 2015 #1877521

RAFTER S LEWIS 61C

BW: 87 lbs. AOD: 3 205D Wt: 829 lbs.

S A V HARVESTOR 0338 AMF CAF NHF DDF
LFE BA LEWIS 323A (1767883)
 SILVER DOME MATILDA 209S

SAR SILVER PRIDE 77S
RAFTER S BLACKBIRD 56Z (1705809)
 SAR BLACKBIRD 162N

S A V HERITAGE 6295 AMF CAF OHF NHF DDF
 S A V EMBLYNETTE 7749 CAF
 ANGUS RIDGE IRISH WIT 44M
 SILVER DOME MATILDA 709M

T Z PRIDE 8P
 SAR MISS MORRISON 34N
 SAR BORDER 62L
 SAR BLACKBIRD 20L

151

MALE SAR 151C APRIL 06 2015 #1874428

RAFTER S LEWIS 151C

BW: 86 lbs. AOD: 3 205D Wt: 793 lbs.

S A V HARVESTOR 0338 AMF CAF NHF DDF
LFE BA LEWIS 323A (1767883)
 SILVER DOME MATILDA 209S

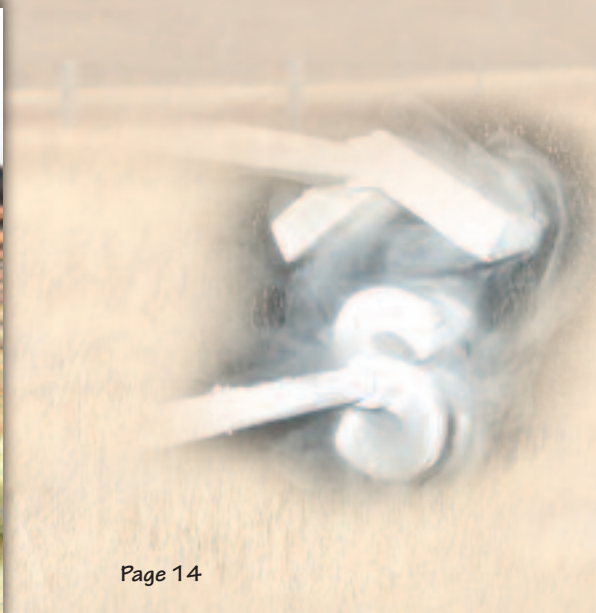
ANDERSON FORT ROCK 1002
RAFTER S BARBARA 307Z (1705806)
 SAR BARBARA 57N

S A V HERITAGE 6295 AMF CAF OHF NHF DDF
 S A V EMBLYNETTE 7749 CAF
 ANGUS RIDGE IRISH WIT 44M
 SILVER DOME MATILDA 709M

SAR FORT ROCK 91T
 REMINGTON ELENA 15T
 SAR STOCKMAN 90K
 SAR BARBARA 121K



Harvestor 0338
 Grandsire of LFE BA
 Lewis 323A



169

MALE SAR 169C APRIL 09 2015 #1877514
RAFTER S LEWIS 169C

BW: 84 lbs. AOD:3 205D Wt: 748 lbs.

S A V HARVESTOR 0338 AMF CAF NHF DDF
LFE **BA LEWIS 323A (1767883)**
SILVER DOME MATILDA 209S

S A V HERITAGE 6295 AMF CAF OHF NHF DDF
S A V EMBLYNETTE 7749 CAF
ANGUS RIDGE IRISH WIT 44M
SILVER DOME MATILDA 709M

SOO LINE KODIAK 9084
RAFTER S GEORGINA 40Z (1705926)
SAR GEORGINA 236W

HF KODIAK 5R AMF CAF OHF NHF MAF DDF
DWAJO JESTRESS 3P
SAR SILVER PRIDE 77S
SAR GEORGINA 70H



Pen #5
Lot #169

133

MALE SAR 133C APRIL 02 2015 #1874424
RAFTER S LEWIS 133C

BW: 80 lbs. AOD: 3 205D Wt: 681 lbs.

S A V HARVESTOR 0338 AMF CAF NHF DDF
LFE **BA LEWIS 323A (1767883)**
SILVER DOME MATILDA 209S

S A V HERITAGE 6295 AMF CAF OHF NHF DDF
S A V EMBLYNETTE 7749 CAF
ANGUS RIDGE IRISH WIT 44M
SILVER DOME MATILDA 709M

WIWA CREEK MONARCH 6'08
RAFTER S KRUGER 99Z (1705868)
SAR KRUGER 116T

SWITZ MONARCH 7R
WIWA CREEK EVERGREEN 37L 38'04
SAR STOCKMAN 90K
SAR KRUGER 73P



Lot #104

104

MALE SAR 104C MARCH 29 2015 #1877460
RAFTER S LEWIS 104C

BW: 94 lbs. AOD: 3 205D Wt: 691lbs.

S A V HARVESTOR 0338 AMF CAF NHF DDF
LFE **BA LEWIS 323A (1767883)**
SILVER DOME MATILDA 209S

S A V HERITAGE 6295 AMF CAF OHF NHF DDF
S A V EMBLYNETTE 7749 CAF
ANGUS RIDGE IRISH WIT 44M
SILVER DOME MATILDA 709M

SAR SILVER PRIDE 77S
RAFTER S PEARL 178Z (1705784)
SAR PEARL 94M

T Z PRIDE 8P
SAR MISS MORRISON 34N
WIWA CREEK STOCKMAN 25'95
DOUBLE J PEARL 245F



Lot #87

248

MALE SAR 248C APRIL 26 2015 #1874457
RAFTER S HESSTON 248C

BW: 86 lbs. AOD: 8 205D Wt: 864 lbs.

SAR HESSTON 97X
RAFTER S HESSTON 92A (1763620)
SAR FLORESS 51U

HF KODIAK 5R AMF CAF OHF NHF MAF DDF
SAR GEORGINA 70H
T Z PRIDE 8P
SAR FLORESS 51P

F-R 662 LAD 4011
SAR BLACKCAP MARY 313T (1392710)
SAR BLACKCAP MARY 133P

DOUBLE AA WINSTON 662'01
F-R 60B LASS 01
HI DIAMOND BLACK CLASS 2031
SAR BLACKCAP MARY 120K

87

MALE SAR 87C MARCH 27 2015 #1879450
RAFTER S LEWIS 87C

BW: 83 lbs. AOD: 3 205D Wt: 717 lbs.

S A V HARVESTOR 0338 AMF CAF NHF DDF
LFE **BA LEWIS 323A (1767883)**
SILVER DOME MATILDA 209S

S A V HERITAGE 6295 AMF CAF OHF NHF DDF
S A V EMBLYNETTE 7749 CAF
ANGUS RIDGE IRISH WIT 44M
SILVER DOME MATILDA 709M

SAR MONARCH 13X
RAFTER S ERICA 7Z (1705994)
SAR ERICA 7X

WIWA CREEK MONARCH 6'08
SAR BARBARA 328U
HF TIGER 5T AMF CAF OHF NHF OSF DDF
SAR ERICA 102U



158

MALE SAR 158C APRIL 08 2015 #1877518
RAFTER S LEWIS 158C

BW: 85 lbs. AOD: 3 205D Wt: 751 lbs.

S A V HARVESTOR 0338 AMF CAF NHF DDF
LFE **BA LEWIS 323A (1767883)**
SILVER DOME MATILDA 209S

S A V HERITAGE 6295 AMF CAF OHF NHF DDF
S A V EMBLYNETTE 7749 CAF
ANGUS RIDGE IRISH WIT 44M
SILVER DOME MATILDA 709M

WIWA CREEK MONARCH 6'08
RAFTER S COUNTESS 52Z (1705930)
SAR COUNTESS 153U

SWITZ MONARCH 7R
WIWA CREEK EVERGREEN 37L 38'04
SAR SILVER PRIDE 77S
SAR COUNTESS 23K



Stauffer Ranches

Bred & Owned 2 Year Old

BULLS WILL BE SOLD IN

NOTE - The Bulls Will Be

PEN #1

Lot #	Sale Day Wt.	Comments
92	_____	_____
2	_____	_____
82	_____	_____
17	_____	_____
10	_____	_____
27	_____	_____
132	_____	_____
138	_____	_____

PEN #2

Lot #	Sale Day Wt.	Comments
39	_____	_____
44	_____	_____
160	_____	_____
16	_____	_____
175	_____	_____
31	_____	_____
67	_____	_____
95	_____	_____

PEN #3

Lot #	Sale Day Wt.	Comments
28	_____	_____
123	_____	_____
162	_____	_____
260	_____	_____
11	_____	_____
111	_____	_____
183	_____	_____
93	_____	_____

PEN #4 - HEIFER BULLS

Lot #	Sale Day Wt.	Comments
71	_____	_____
52	_____	_____
34	_____	_____
25	_____	_____
49	_____	_____
60	_____	_____
40	_____	_____
36	_____	_____

PEN #5

Lot #	Sale Day Wt.	Comments
61	_____	_____
151	_____	_____
169	_____	_____
133	_____	_____
104	_____	_____
248	_____	_____
87	_____	_____
158	_____	_____

PEN #6

Lot #	Sale Day Wt.	Comments
8	_____	_____
32	_____	_____
77	_____	_____
173	_____	_____
145	_____	_____
165	_____	_____
100	_____	_____
109	_____	_____



CONSECUTIVE PEN ORDER!

Entering The Ring in PAIRS!!

PEN #7

Lot #	Sale Day Wt.	Comments
97	_____	_____
143	_____	_____
262	_____	_____
96	_____	_____
237	_____	_____
152	_____	_____
266	_____	_____
198	_____	_____

PEN #8

Lot #	Sale Day Wt.	Comments
297	_____	_____
85	_____	_____
298	_____	_____
193	_____	_____
217	_____	_____
220	_____	_____
296	_____	_____
94	_____	_____

PEN #9 - HEIFER BULLS

Lot #	Sale Day Wt.	Comments
48	_____	_____
76	_____	_____
253	_____	_____
295	_____	_____
184	_____	_____
208	_____	_____
172	_____	_____
216	_____	_____

PEN #7

Lot #	Sale Day Wt.	Comments
148	_____	_____
218	_____	_____
294	_____	_____
72	_____	_____
42	_____	_____
99	_____	_____
245	_____	_____
135	_____	_____
108	_____	_____
207	_____	_____

PLEASE NOTE -

- ✓ Supplemental information sheets will be available Sale Day which will include Sale Day Weights which you may wish to record in the spaces provided on these two pages
- ✓ Bulls will sell in Catalogue Order
- ✓ Bulls will enter the sale ring in pairs; highest bidder has choice of the pair or option to take both bulls at twice the \$ value bid
- ✓ All bulls semen evaluated, tested BVD Negative and delivered to your ranch by Stauffer Ranches following the sale

Lot #8

Pen #6



8

MALE TW SAR 8C MARCH 10 2015 #1877493

RAFTER S RUSH LAKE 8C

BW: 66 lbs. AOD: 9 205D Wt: 718 lbs.

SOO LINE MOTIVE 9016
WIWA CREEK RUSH LAKE 71'12 (1663194)
 WIWA CREEK PRIDE 63'10

SANDY BAR CASTLEROCK 173P DDF
SAR PRINCESS 15S (1339000)
 SAR PRINCESS 155P

HF KODIAK 5RAMF CAF OHF NHF MAF DDF
 TLA BEAUTY 5R
 WIWA CREEK FULLBACK 19'07
 WIWA CREEK PRIDE 94'06

TC ADVANTAGE AMF CAF OHF NHF DDC
 SANDY BAR LASS 29M
 WIWA CREEK KRUGERRAND 223'02
 SAR PRINCESS 9L

32

MALE SAR 32C MARCH 16 2015 #1879431

RAFTER S RUSH LAKE 32C

BW: 86 lbs. AOD: 2 205D Wt: 691 lbs.

SOO LINE MOTIVE 9016
WIWA CREEK RUSH LAKE 71'12 (1663194)
 WIWA CREEK PRIDE 63'10

S A V 004 DENSITY 4336 AMF CAF OHF NHF
RAFTER S MISS ROSEBUD 78A (1769218)
 SAR MISS ROSEBUD 45T

HF KODIAK 5RAMF CAF OHF NHF MAF DDF
 TLA BEAUTY 5R
 WIWA CREEK FULLBACK 19'07
 WIWA CREEK PRIDE 94'06

S A V 8180 TRAVELER 004 DMF DWF AMF CAF
 S A V MAY 7238 CAF DDF
 SANDY BAR CASTLEROCK 173P DDF
 SAR MISS ROSEBUD 62P



Pen #6

Lot #77

77

MALE SAR 77C MARCH 24 2015 #1877473

RAFTER S RUSH LAKE 77C

BW: 81 lbs. AOD: 6 205D Wt: 685 lbs.

SOO LINE MOTIVE 9016
WIWA CREEK RUSH LAKE 71'12 (1663194)
WIWA CREEK PRIDE 63'10

HF KODIAK 5RAMF CAF OHF NHF MAF DDF
TLA BEAUTY 5R
WIWA CREEK FULLBACK 19'07
WIWA CREEK PRIDE 94'06

SAR CRESCENT 86S
SAR BARBARA 11W (1503049)
SAR BARBARA 346T

F-R 662 LAD 4011
SAR ROSEBUD 18N
SAR BORDER 309R
SAR BARBARA 78R



173

MALE SAR 173C APRIL 10 2015 #1877467

RAFTER S RUSH LAKE 173C

BW: 87 lbs. AOD: 12 205D Wt: 802 lbs.

SOO LINE MOTIVE 9016
WIWA CREEK RUSH LAKE 71'12 (1663194)
WIWA CREEK PRIDE 63'10

HF KODIAK 5RAMF CAF OHF NHF MAF DDF
TLA BEAUTY 5R
WIWA CREEK FULLBACK 19'07
WIWA CREEK PRIDE 94'06

PR STOCKMAN 2'01
SAR ERROLLINE 73N (1281294)
SAR ERROLLINE 157L

WIWA CREEK STOCKMAN 14'99
BATTLE CREEK ERICA 40J
SAR HERDBUILDER 50H
SAR ERROLLINE 50J



Lot #145

145

MALE SAR 145C APRIL 04 2015 #1877501

RAFTER S RUSH LAKE 145C

BW: 92 lbs. AOD: 9 205D Wt: 785 lbs.

SOO LINE MOTIVE 9016
WIWA CREEK RUSH LAKE 71'12 (1663194)
WIWA CREEK PRIDE 63'10

HF KODIAK 5RAMF CAF OHF NHF MAF DDF
TLA BEAUTY 5R
WIWA CREEK FULLBACK 19'07
WIWA CREEK PRIDE 94'06

SFL FORT ROCK 11F
SAR BLUEBIRD LASS 59S (1339041)
SAR BLUEBIRD LASS 106K

BELVIN BOARDWALK 11'92
WICKLOW MISS ROSEBUD 22C
WIWA CREEK STOCKMAN 48'95
SFL BLUEBIRD LASS 15



Lot #100

165

MALE SAR 165C APRIL 09 2015 #1874431

RAFTER S RUSH LAKE 165C

BW: 88 lbs. AOD: 3 205D Wt: 752 lbs.

SOO LINE MOTIVE 9016
WIWA CREEK RUSH LAKE 71'12 (1663194)
WIWA CREEK PRIDE 63'10

HF KODIAK 5RAMF CAF OHF NHF MAF DDF
TLA BEAUTY 5R
WIWA CREEK FULLBACK 19'07
WIWA CREEK PRIDE 94'06

SAR SILVER PRIDE 180U
RAFTER S BEAUTY 3Z (1705762)
SAR BEAUTY 68J

SAR SILVER PRIDE 77S
SAR ROSEBUD 15J
SFL BORDER 23G
SFL BEAUTY 17G

100

MALE SAR 100C MARCH 28 2015 #1877519

RAFTER S RUSH LAKE 100C

BW: 88 lbs. AOD: 8 205D Wt: 717 lbs.

SOO LINE MOTIVE 9016
WIWA CREEK RUSH LAKE 71'12 (1663194)
WIWA CREEK PRIDE 63'10

HF KODIAK 5RAMF CAF OHF NHF MAF DDF
TLA BEAUTY 5R
WIWA CREEK FULLBACK 19'07
WIWA CREEK PRIDE 94'06

SAR WATERTON 2R
SAR BLUEBIRD LASS 96T (1392566)
SAR BLUEBIRD LASS 25L

R&J ATLAS 3201
SFL ROSEBUD LADY 4E
WIWA CREEK STOCKMAN 48'95
SFL BLUEBIRD LASS 15F

109

MALE SAR 109C MARCH 30 2015 #1877522

RAFTER S RUSH LAKE 109C

BW: 86 lbs. AOD: 5 205D Wt: 733 lbs.

SOO LINE MOTIVE 9016
WIWA CREEK RUSH LAKE 71'12 (1663194)
WIWA CREEK PRIDE 63'10

HF KODIAK 5RAMF CAF OHF NHF MAF DDF
TLA BEAUTY 5R
WIWA CREEK FULLBACK 19'07
WIWA CREEK PRIDE 94'06

SAR WATERTON 14U
SAR MORRISON 311X (1562591)
SAR MORRISON 168R

SAR WATERTON 2R
SAR TIB ANNIE K 93S
SFL FORT ROCK 11F
SAR MORRISON 75M

Lot #97

Pen #7



97

MALE SAR 97C MARCH 28 2015 #1877530

RAFTER S DENSITY 97C

BW: 83 lbs. AOD: 5 205D Wt: 685 lbs.

S A V 8180 TRAVELER 004 DMF DWF AMF
S A V 004 DENSITY 4336 AMF CAF (1266311)
S A V MAY 7238 CAF DDF

SITZ TRAVELER 8180 AMF CAF OHF NHF DDF
BOYD FOREVER LADY 8003
LEACHMAN RIGHT TIME DMF AMF
S A R PROSPECTOR MAY 9124 OHF DDF

SAR WATERTON 14U
SAR BONNY 374X (1562782)
SAR BONNY 215R

SAR WATERTON 2R
SAR TIB ANNIE K 93S
WIWA CREEK KRUGERRAND 223'02
SAR BONNY 3J

143

MALE SAR 143C APRIL 04 2015 #1884481

RAFTER S DENSITY 143C

BW: 96 lbs. AOD: 8 205D Wt: 665 lbs.

S A V 8180 TRAVELER 004 DMF DWF AMF
S A V 004 DENSITY 4336 AMF CAF (1266311)
S A V MAY 7238 CAF DDF

SITZ TRAVELER 8180 AMF CAF OHF NHF DDF
BOYD FOREVER LADY 8003
LEACHMAN RIGHT TIME DMF AMF
S A R PROSPECTOR MAY 9124 OHF DDF

SAR FORT ROCK 151R
SAR MISS ELLEN ERICA 62T (1392724)
SAR MISS ELLEN ERICA 174P

SFL FORT ROCK 11F
SAR QUEEN MOTHER 24J
WIWA CREEK KRUGERRAND 223'02
SAR MISS ELLEN ERICA 121L



Density 4336 -
Sire of Lot #97
& Lot #143

262

MALE SAR 262C APRIL 28 2015 #1874461
RAFTER S LEWIS 262C

BW: 87 lbs. AOD: 4 205D Wt: 738 lbs.

SA V 004 DENSITY 4336 AMF CAF OHF NHF
RAFTER S DENSITY 76A (1769213)
SAR ANNIE K 93Y

SA V 8180 TRAVELER 004 DMF DWF AMF CAF
SA V MAY 7238 CAF DDF
SAR RANGER 60U
SAR TIB ANNIE K 92P

SOO LINE KODIAK 9084
SAR ERICA 76Y (1631791)
SAR ERICA 328S

HF KODIAK 5R AMF CAF OHF NHF MAF DDF
DWAJO JESTRESS 3P
SAR LANE 101N
SAR ERICA 190P

96

MALE SAR 96C MARCH 28 2015 #1879451
RAFTER S LEWIS 96C

BW: 94 lbs. AOD: 3 205D Wt: 673 lbs.

SA V HARVESTOR 0338 AMF CAF NHF DDF
LFE BA LEWIS 323A (1767883)
SILVER DOME MATILDA 209S

SA V HERITAGE 6295 AMF CAF OHF NHF DDF
SA V EMBLYNETTE 7749 CAF
ANGUS RIDGE IRISH WIT 44M
SILVER DOME MATILDA 709M

WIWA CREEK MONARCH 6'08
RAFTER S ROSEBUD 46Z (1705768)
SAR ROSEBUD 100M

SWITZ MONARCH 7R
WIWA CREEK EVERGREEN 37L 38'04
WIWA CREEK STOCKMAN 48'95
SFL MISS ROSEBUD 4F



Pen #7
Lot #262

237

MALE SAR 237C APRIL 24 2015 #1874454
RAFTER S HESSTON 237C

BW: 88 lbs. AOD: 4 205D Wt: 641 lbs.

SAR HESSTON 97X
RAFTER S HESSTON 92A (1763620)
SAR FLORESS 51U

HF KODIAK 5R AMF CAF OHF NHF MAF DDF
SAR GEORGINA 70H
T Z PRIDE 8P
SAR FLORESS 51P

SOO LINE KODIAK 9084
SAR EUGENE 201Y (1631945)
SAR EUGENE 87N

HF KODIAK 5R AMF CAF OHF NHF MAF DDF
DWAJO JESTRESS 3P
WIWA CREEK STOCKMAN 48'95
DOUBLE J EUGENIE 148Z



Lot #237

152

MALE SAR 152C APRIL 06 2015 #1884482
RAFTER S DENSITY 152C

BW: 80 lbs. AOD: 3 205D Wt: 665 lbs.

SA V 004 DENSITY 4336 AMF CAF OHF NHF
RAFTER S DENSITY 76A (1769213)
SAR ANNIE K 93Y

SA V 8180 TRAVELER 004 DMF DWF AMF CAF
SA V MAY 7238 CAF DDF
SAR RANGER 60U
SAR TIB ANNIE K 92P

WIWA CREEK ESCALADE 77'10
RAFTER S ANNIE 137Z (1706025)
SAR ANNIE 162X

WIWA CREEK ESCALADE 815'08
WIWA CREEK BONNIE 62'08
SAR RANGER 60U
SAR ANNIE 181T



Lot #266

266

MALE SAR 266C APRIL 30 2015 #1874466
RAFTER S LEWIS 266C

BW: 86 lbs. AOD: 11 205D Wt: 712 lbs.

SA V HARVESTOR 0338 AMF CAF NHF DDF
LFE BA LEWIS 323A (1767883)
SILVER DOME MATILDA 209S

SA V HERITAGE 6295 AMF CAF OHF NHF DDF
SA V EMBLYNETTE 7749 CAF
ANGUS RIDGE IRISH WIT 44M
SILVER DOME MATILDA 709M

SAR BORDER 62L
SAR EPPONIA 3P (1245770)
SAR EPPONIA 66M

SAR JEWEL 62J
WIWA CREEK PRIDE 71G 83'99
SAR STOCKMAN 90K
SAR EPPONIA 111J

198

MALE SAR 198C APRIL 17 2015 #1886740
RAFTER S MONARCH 198C

BW: 89 lbs. AOD: 4 205D Wt: 720 lbs.

WIWA CREEK MONARCH 6'08
RAFTER S MONARCH 114Z (1705775)
SAR BEAUTY 102L

SWITZ MONARCH 7R
WIWA CREEK EVERGREEN 37L 38'04
WIWA CREEK STOCKMAN 48'95
ABERLYNN BEAUTY 30'93

SA V BISMARCK 5682 AMF CAF OHF NHF
SAR DAISY 1Y (1631730)
BROOKMORE DAISY 122W

GA R GRID MAKER AMF CAF OHF NHF DDF
SA V ABIGALE 0451
SA V 004 DENSITY 4336 AMF CAF OHF NHF
BROOKMORE DAISY 212R CAC

Lot #297

Pen #8



297

MALE SAR 297C APRIL 23 2015 #1874453

RAFTER S MONARCH 297C

BW: 86 lbs. AOD: 7 205D Wt: 769 lbs.

WIWA CREEK MONARCH 6'08
SAR MONARCH 94Y (1631813)
SAR BEAUTY 185T

T Z PRIDE 8P
SAR MISS QUALITY 209U (1445750)
SAR MISS QUALITY 200N

SWITZ MONARCH 7R
WIWA CREEK EVERGREEN 37L 38'04
SAR FORT ROCK 151R
SAR BEAUTY 68J

SITZ ALLIANCE 6595 DMF AMF CAF OHF NHF
TZ LACEY 8L
SAR LOYAL 43L
LLB MISS QUALITY 314J

85

MALE SAR 85C APRIL 23 2015 #1884480

RAFTER S MONARCH 85C

BW: 87 lbs. AOD: 3 205D Wt: 657 lbs.

WIWA CREEK MONARCH 6'08
SAR MONARCH 94Y (1631813)
SAR BEAUTY 185T

SAR WATERTON 69U
RAFTER S MATILDA 319Z (1710869)
SAR MATILDA 314U

SWITZ MONARCH 7R
WIWA CREEK EVERGREEN 37L 38'04
SAR FORT ROCK 151R
SAR BEAUTY 68J

SAR WATERTON 2R
SAR QUEEN MOTHER 16P
F-R 662 LAD 4011
SAR MATILDA 154P



Monarch 94Y -
Sire of Lots
297,85, 298
and several other
sale lots

298

MALE SAR 298C APRIL 22 2015 #1874452

RAFTER S MONARCH 298C

BW: 91 lbs. AOD: 7 205D Wt: 730 lbs.

WIWA CREEK MONARCH 6'08
SAR MONARCH 94Y (1631813)
SAR BEAUTY 185T

SWITZ MONARCH 7R
WIWA CREEK EVERGREEN 37L 38'04
SAR FORT ROCK 151R
SAR BEAUTY 68J

F-R 662 LAD 4011
SAR MORRISON 315U (1445519)
SAR MORRISON 60R

DOUBLE AA WINSTON 662'01
F-R 60B LASS 01
CHALCO NEWTON 13N
SAR MORRISON 43M

193

MALE SAR 193C APRIL 16 2015 #1877524

RAFTER S HESSTON 193C

BW: 81 lbs. AOD: 8 205D Wt: 761 lbs.

SAR HESSTON 97X
RAFTER S HESSTON 92A (1763620)
SAR FLORESS 51U

HF KODIAK 5R AMF CAF OHF NHF MAF DDF
SAR GEORGINA 70H
T Z PRIDE 8P
SAR FLORESS 51P

SAR LANE 101N
SAR PANSY 118T (1392757)
SAR PANSY 111R

PR STOCKMAN 2'01
SAR ERROLLINE 164L
WIWA CREEK KRUGERRAND 214'02
SAR PANSY 62H

217

MALE SAR 217C APRIL 19 2015 #1874445

RAFTER S HESSTON 217C

BW: 87 lbs. AOD: 8 205D Wt: 752 lbs.

SAR HESSTON 97X
RAFTER S HESSTON 92A (1763620)
SAR FLORESS 51U

HF KODIAK 5R AMF CAF OHF NHF MAF DDF
SAR GEORGINA 70H
T Z PRIDE 8P
SAR FLORESS 51P

SAR WATERTON 2R
SAR BRIDE 8T (1392767)
SAR BRIDE 150R

R&J ATLAS 3201
SFL ROSEBUD LADY 4E
WIWA CREEK KRUGERRAND 223'02
SAR BRIDE 101K

220

MALE SAR 220C APRIL 20 2015 #1877538

RAFTER S HESSTON 220C

BW: 88 lbs. AOD: 8 205D Wt: 709 lbs.

SAR HESSTON 97X
RAFTER S HESSTON 92A (1763620)
SAR FLORESS 51U

HF KODIAK 5R AMF CAF OHF NHF MAF DDF
SAR GEORGINA 70H
T Z PRIDE 8P
SAR FLORESS 51P

SAR WATERTON 2R
SAR PANSY 311T (1392737)
SAR PANSY 26R

R&J ATLAS 3201
SFL ROSEBUD LADY 4E
WIWA CREEK KRUGERRAND 223'02
SAR PANSY 12K

296

MALE SAR 296C APRIL 09 2015 #1874435

RAFTER S MONARCH 296C

BW: 87 lbs. AOD: 7 205D Wt: 733 lbs.

WIWA CREEK MONARCH 6'08
SAR MONARCH 94Y (1631813)
SAR BEAUTY 185T

SWITZ MONARCH 7R
WIWA CREEK EVERGREEN 37L 38'04
SAR FORT ROCK 151R
SAR BEAUTY 68J

SAR SILVER PRIDE 77S
SAR LUCY 142U (1445663)
SAR LUCY 141N

T Z PRIDE 8P
SAR MISS MORRISON 34N
WIWA CREEK RITO 53'00
SAR LUCY 115J

94

MALE SAR 94C APRIL 17 2015 #1874470

RAFTER S MONARCH 94C

BW: 93 lbs. AOD: 3 205D Wt: 748 lbs.

WIWA CREEK MONARCH 6'08
SAR MONARCH 94Y (1631813)
SAR BEAUTY 185T

SWITZ MONARCH 7R
WIWA CREEK EVERGREEN 37L 38'04
SAR FORT ROCK 151R
SAR BEAUTY 68J

SAR MONARCH 13X
RAFTER S JULIE 332Z (1706013)
SAR JULIE 367X

WIWA CREEK MONARCH 6'08
SAR BARBARA 328U
SAR SILVER PRIDE 158U
SAR JULIE 101U

Pen #8

Lot #298



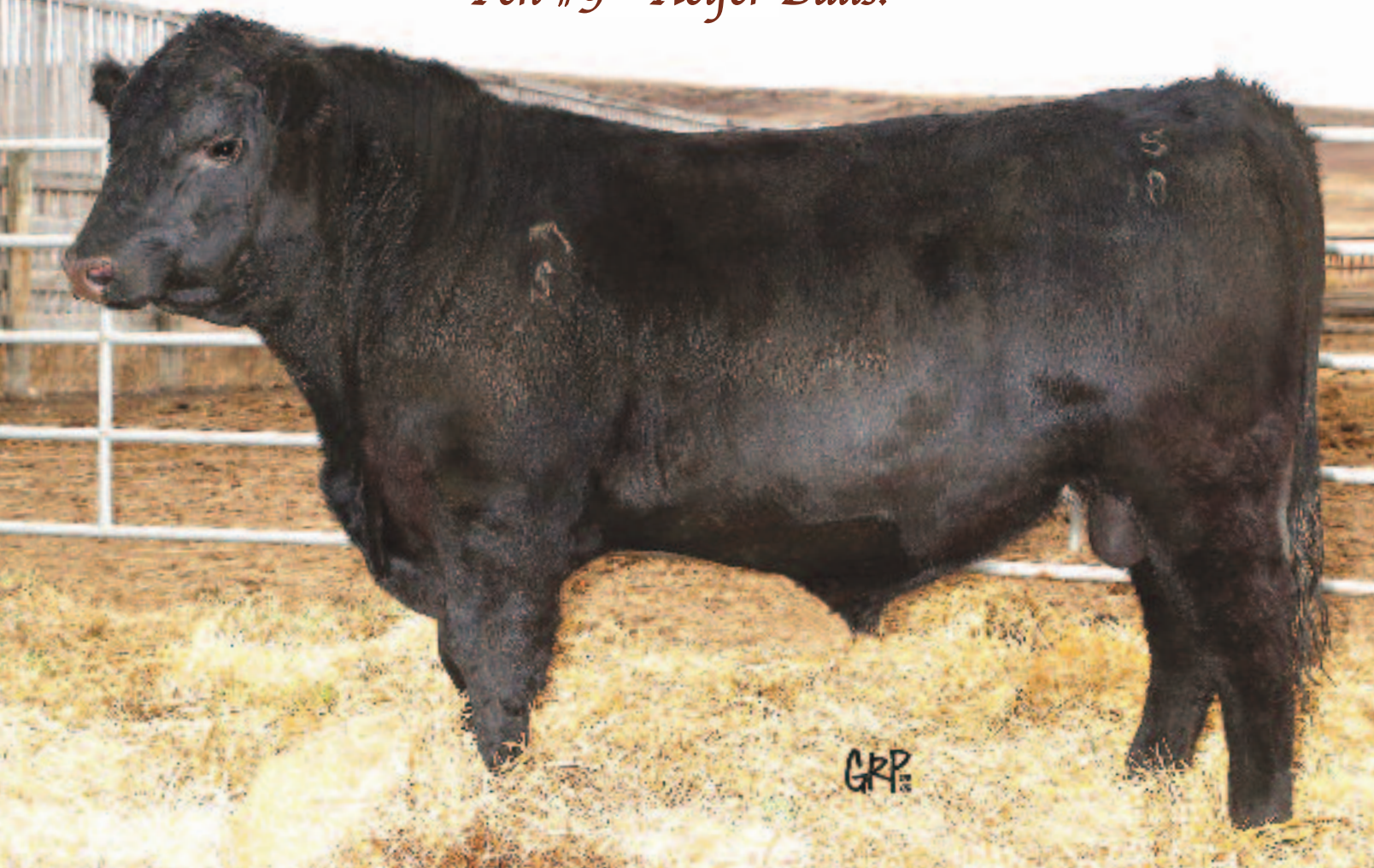
Lot #217



Lot #296



Pen #9 - Heifer Bulls!



48

MALE SAR 48C MARCH 19 2015 #1879439

RAFTER S VALLEY 48C

BW: 74 lbs. AOD: 2 205D Wt: 780 lbs.

S A V IRON MOUNTAIN 8066 NHF MAF DDF
S A V ANGUS VALLEY 1867 AMF (1719214)
 S A V MAY 2397 CAF

TC GRIDIRON 258 AMF CAF OHF NHF DDF
 S A V MADAME PRIDE 3249 CAF DDF
 S A F 598 BANDO 5175 AMF CAC DDF
 S A V MAY 7238 CAF DDF

SAR WATERTON 14U
RAFTER S DELLA 125A (1763637)
 SAR DELLA 179M

SAR WATERTON 2R
 SAR TIB ANNIE K 93S
 SAR STOCKMAN 90K
 SFL MISS DELLA 2G

76

MALE SAR 76C MARCH 24 2015 #1879437

RAFTER S VALLEY 76C

BW: 78 lbs. AOD: 2 205D Wt: 723 lbs.

S A V IRON MOUNTAIN 8066 NHF MAF DDF
S A V ANGUS VALLEY 1867 AMF (1719214)
 S A V MAY 2397 CAF

TC GRIDIRON 258 AMF CAF OHF NHF DDF
 S A V MADAME PRIDE 3249 CAF DDF
 S A F 598 BANDO 5175 AMF CAC DDF
 S A V MAY 7238 CAF DDF

SAR HESSTON 97X
RAFTER S KRUGER 116A (1763633)
 SAR KRUGER 100X

HF KODIAK 5R AMF CAF OHF NHF MAF DDF
 SAR GEORGINA 70H
 SAR RANGER 60U
 SAR KRUGER 116T

PEN 9 – HEIFER BULLS!

Pen 9 represents another reliable set of Calving Ease Bulls. Leading off is a pair of Angus Valley sons followed by a pair of Monarch bred calving ease bulls. Escalade 77X, sire of the last two pairs, was used three years in a row on our virgin heifers without any issues.

**Another excellent group of
 Calving Ease Bulls!**



253

MALE SAR 253C APRIL 28 2015 #1874465

RAFTER S MONARCH 253C

BW: 85 lbs. AOD: 5 205D Wt: 717 lbs.

WIWA CREEK MONARCH 6'08
SAR MONARCH 94Y (1631813)
SAR BEAUTY 185T

SWITZ MONARCH 7R
WIWA CREEK EVERGREEN 37L 38'04
SAR FORT ROCK 151R
SAR BEAUTY 68J

SAR SILVER PRIDE 158U
SAR FLORESS 359X (1582490)
SAR FLORESS 192U

SAR SILVER PRIDE 77S
SAR EPPONIA 3P
T Z PRIDE 8P
SAR FLORESS 211N

295

MALE SAR 295C APRIL 11 2015 #1874436

RAFTER S MONARCH 295C

BW: 77 lbs. AOD: 7 205D Wt: 656 lbs.

WIWA CREEK MONARCH 6'08
SAR MONARCH 94Y (1631813)
SAR BEAUTY 185T

SWITZ MONARCH 7R
WIWA CREEK EVERGREEN 37L 38'04
SAR FORT ROCK 151R
SAR BEAUTY 68J

WIWA CREEK KRUGERRAND 214'02
SAR BLACKBIRD 121U (1445654)
SAR BLACKBIRD 79L

EASTONDALE KRUGERRAND 63'00
WIWA CREEK TILDA 16C 40'96
WIWA CREEK STOCKMAN 48'95
DOUBLE J BLACKBIRD 75F

184

MALE SAR 184C APRIL 14 2015 #1874440

RAFTER S ESCALADE 184C

BW: 88 lbs. AOD: 3 205D Wt: 746 lbs.

WIWA CREEK ESCALADE 815'08
WIWA CREEK ESCALADE 77'10 (1554447)
WIWA CREEK BONNIE 62'08

ANNA'S STUDMUFFIN 102S
WIWA CREEK EVERGREEN 411'04
SWITZ MONARCH 7R
WIWA CREEK BONNIE 73'06

WIWA CREEK MONARCH 6'08
RAFTER S FLORESS 154Z (1705967)
SAR FLORESS 51U

SWITZ MONARCH 7R
WIWA CREEK EVERGREEN 37L 38'04
T Z PRIDE 8P
SAR FLORESS 51P

208

MALE SAR 208C APRIL 19 2015 #1879436

RAFTER S ESCALADE 208C

BW: 75 lbs. AOD: 2 205D Wt: 739 lbs.

WIWA CREEK ESCALADE 815'08
WIWA CREEK ESCALADE 77'10 (1554447)
WIWA CREEK BONNIE 62'08

ANNA'S STUDMUFFIN 102S
WIWA CREEK EVERGREEN 411'04
SWITZ MONARCH 7R
WIWA CREEK BONNIE 73'06

SAR SILVER PRIDE 77S
RAFTER S BEAUTY 98A (1763624)
SAR BEAUTY 343W

T Z PRIDE 8P
SAR MISS MORRISON 34N
F-R 662 LAD 4011
SAR BEAUTY 72S

172

MALE SAR 172C APRIL 10 2015 #1879426

RAFTER S ESCALADE 172C

BW: 75 lbs. AOD: 2 205D Wt: 794 lbs.

WIWA CREEK ESCALADE 815'08
WIWA CREEK ESCALADE 77'10 (1554447)
WIWA CREEK BONNIE 62'08

ANNA'S STUDMUFFIN 102S
WIWA CREEK EVERGREEN 411'04
SWITZ MONARCH 7R
WIWA CREEK BONNIE 73'06

SAR RANGER 60U
RAFTER S BRIDE 51A (1763737)
SAR BRIDE 81U

SAR WATERTON 2R
SAR MISS MORRISON 34N
SANDY BAR CASTLEROCK 173P DDF
SAR BRIDE 150R

216

MALE SAR 216C APRIL 19 2015 #1879446

RAFTER S ESCALADE 216C

BW: 78 lbs. AOD: 2 205D Wt: 753 lbs.

WIWA CREEK ESCALADE 815'08
WIWA CREEK ESCALADE 77'10 (1554447)
WIWA CREEK BONNIE 62'08

ANNA'S STUDMUFFIN 102S
WIWA CREEK EVERGREEN 411'04
SWITZ MONARCH 7R
WIWA CREEK BONNIE 73'06

SAR SILVER PRIDE 77S
RAFTER S LADY 190A (1763676)
SAR LADY 29T

T Z PRIDE 8P
SAR MISS MORRISON 34N
SAR LANE 101N
SAR LADY 209R

Pen #9

Lot #253



Lot #184



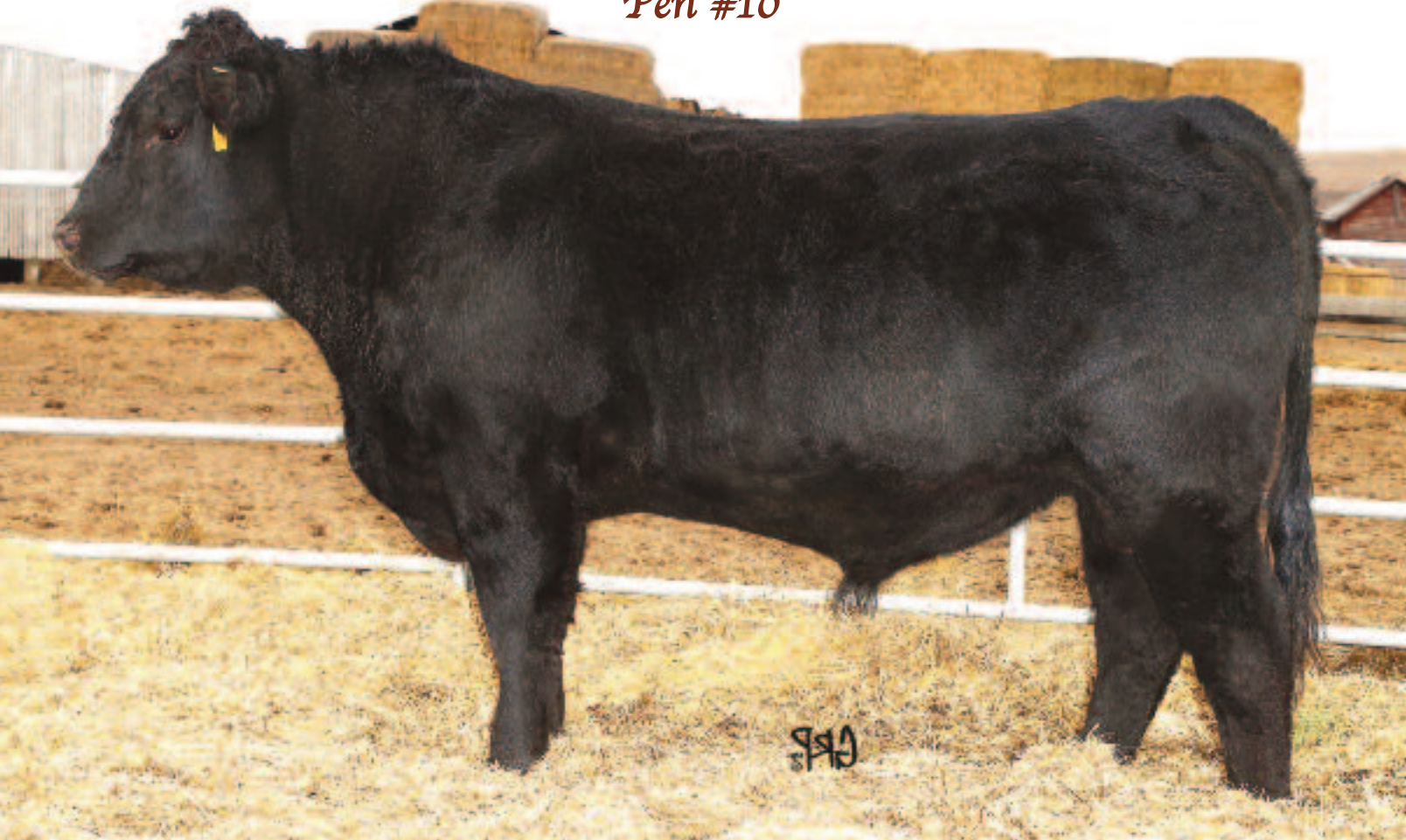
Lot #184



SAR 77S -
Maternal Sire
of Lot #216

Lot #148

Pen #10



148

MALE SAR 148C APRIL 04 2015 #1874427

RAFTER S DENSITY 148C

BW: 79 lbs. AOD: 3 205D Wt: 694 lbs.

S A V 004 DENSITY 4336 AMF CAF OHF NHF
RAFTER S DENSITY 76A (1769213)
SAR ANNIE K 93Y

S A V 8180 TRAVELER 004 DMF DWF AMF CAF
S A V MAY 7238 CAF DDF
SAR RANGER 60U
SAR TIB ANNIE K 92P

WIWA CREEK MONARCH 6'08
RAFTER S KRUGER 117Z (1705827)
SAR KRUGER 73P

SWITZ MONARCH 7R
WIWA CREEK EVERGREEN 37L 38'04
WIWA CREEK KRUGERRAND 214'02
SAR KARAMA 3L

218

MALE SAR 218C APRIL 19 2015 #1874446

RAFTER S RUSH LAKE 218C

BW: 86 lbs. AOD:9 205D Wt: 634 lbs.

SOO LINE MOTIVE 9016
WIWA CREEK RUSH LAKE 71'12 (1663194)
WIWA CREEK PRIDE 63'10

HF KODIAK 5R AMF CAF OHF NHF MAF DDF
TLA BEAUTY 5R
WIWA CREEK FULLBACK 19'07
WIWA CREEK PRIDE 94'06

SANDY BAR CASTLEROCK 173P DDF
SAR PRIDE 136S (1339105)
LLB PRIDE 419G

TC ADVANTAGE AMF CAF OHF NHF DDC
SANDY BAR LASS 29M
EARLY SUNSET WHAM 20D
PAT LADY PRIDE 419B

Lot #294



294

MALE SAR 294C APRIL 20 2015 #1874447

RAFTER S MONARCH 294C

BW: 87 lbs. AOD: 7 205D Wt: 645 lbs.

WIWA CREEK MONARCH 6'08
SAR MONARCH 94Y (1631813)
SAR BEAUTY 185T

SWITZ MONARCH 7R
WIWA CREEK EVERGREEN 37L 38'04
SAR FORT ROCK 151R
SAR BEAUTY 68J

F-R 662 LAD 4011
SAR ELLEN ERICA 369U (1445742)
SAR ELLEN ERICA 12P

DOUBLE AA WINSTON 662'01
F-R 60B LASS 01
PR STOCKMAN 2'01
SAR ELLEN ERICA 23M

72

MALE SAR 72C MARCH 23 2015 #1877515

RAFTER S LEWIS 72C

BW: 92 lbs. AOD: 3 205D Wt: 775 lbs.

S A V HARVESTOR 0338 AMF CAF NHF DDF
LFE BA LEWIS 323A (1767883)
SILVER DOME MATILDA 209S

S A V HERITAGE 6295 AMF CAF OHF NHF DDF
S A V EMBLYNETTE 7749 CAF
ANGUS RIDGE IRISH WIT 44M
SILVER DOME MATILDA 709M

WIWA CREEK MONARCH 6'08
RAFTER S LUCY 49Z (1705817)
SAR LUCY 141N

SWITZ MONARCH 7R
WIWA CREEK EVERGREEN 37L 38'04
WIWA CREEK RITO 53'00
SAR LUCY 115J

42

MALE SAR 42C MARCH 17 2015 #1877528

RAFTER S LEWIS 42C

BW: 83 lbs. AOD: 3 205D Wt: 804 lbs.

S A V HARVESTOR 0338 AMF CAF NHF DDF
LFE BA LEWIS 323A (1767883)
SILVER DOME MATILDA 209S

S A V HERITAGE 6295 AMF CAF OHF NHF DDF
S A V EMBLYNETTE 7749 CAF
ANGUS RIDGE IRISH WIT 44M
SILVER DOME MATILDA 709M

SOO LINE KODIAK 9084
RAFTER S ANNIE 102Z (1705948)
SAR ANNIE 46W

HF KODIAK 5R AMF CAF OHF NHF MAF DDF
DWAJO JESTRESS 3P
SAR SILVER PRIDE 77S
SAR ANNIE 99M

99

MALE SAR 99C MARCH 28 2015 #1879417

RAFTER S VALLEY 99C

BW: 92 lbs. AOD: 2 205D Wt: 740 lbs.

S A V IRON MOUNTAIN 8066 NHF MAF DDF
S A V ANGUS VALLEY 1867 AMF (1719214)
S A V MAY 2397 CAF

TC GRIDIRON 258 AMF CAF OHF NHF DDF
S A V MADAME PRIDE 3249 CAF DDF
S A F 598 BANDO 5175 AMF CAC DDF
S A V MAY 7238 CAF DDF

SAR WATERTON 69U
RAFTER S ALLEGRA 15A (1770094)
SAR ALLEGRA 140M

SAR WATERTON 2R
SAR QUEEN MOTHER 16P
SAR STOCKMAN 90K
SAR ALLEGRA 130J



Pen #10
Lot #42

245

MALE SAR 245C APRIL 26 2015 #1874456

RAFTER S HESSTON 245C

BW: 89 lbs. AOD: 6 205D Wt: 732 lbs.

SAR HESSTON 97X
RAFTER S HESSTON 92A (1763620)
SAR FLORESS 51U

HF KODIAK 5R AMF CAF OHF NHF MAF DDF
SAR GEORGINA 70H
T Z PRIDE 8P
SAR FLORESS 51P

SAR SILVER PRIDE 77S
SAR PRINCESS 83W (1503131)
SAR PRINCESS 58P

T Z PRIDE 8P
SAR MISS MORRISON 34N
WIWA CREEK KRUGERRAND 223'02
SAR PRINCESS 186L



Lot #245

135

MALE SAR 135C APRIL 03 2015 #1874425

RAFTER S LEWIS 135C

BW: 96 lbs. AOD: 3 205D Wt: 704 lbs.

S A V HARVESTOR 0338 AMF CAF NHF DDF
LFE BA LEWIS 323A (1767883)
SILVER DOME MATILDA 209S

S A V HERITAGE 6295 AMF CAF OHF NHF DDF
S A V EMBLYNETTE 7749 CAF
ANGUS RIDGE IRISH WIT 44M
SILVER DOME MATILDA 709M

SAR HESSTON 97X
RAFTER S ERICA 88Z (1706015)
SAR ERICA 366X

HF KODIAK 5R AMF CAF OHF NHF MAF DDF
SAR GEORGINA 70H
SAR WATERTON 69U
SAR ERICA 104N



Lot #108

108

MALE SAR 108C MARCH 29 2015 #1879441

RAFTER S ESCALADE 108C

BW: 78 lbs. AOD: 2 205D Wt: 758 lbs.

WIWA CREEK ESCALADE 815'08
WIWA CREEK ESCALADE 77'10 (1554447)
WIWA CREEK BONNIE 62'08

ANNA'S STUDMUFFIN 102S
WIWA CREEK EVERGREEN 411'04
SWITZ MONARCH 7R
WIWA CREEK BONNIE 73'06

SAR HESSTON 97X
RAFTER S BAR LASS 158A (1763659)
SAR BAR LASS 114T

HF KODIAK 5R AMF CAF OHF NHF MAF DDF
SAR GEORGINA 70H
T Z PRIDE 8P
SAR BAR LASS 150P

207

MALE SAR 207C APRIL 18 2015 #1877540

RAFTER S RUSH LAKE 207C

BW: 84 lbs. AOD: 4 205D Wt: 718 lbs.

SOO LINE MOTIVE 9016
WIWA CREEK RUSH LAKE 71'12 (1663194)
WIWA CREEK PRIDE 63'10

HF KODIAK 5R AMF CAF OHF NHF MAF DDF
TLA BEAUTY 5R
WIWA CREEK FULLBACK 19'07
WIWA CREEK PRIDE 94'06

SAR RANGER 60U
SAR BLACKBIRD 44Y (1631762)
SAR BLACKBIRD 20L

SAR WATERTON 2R
SAR MISS MORRISON 34N
WIWA CREEK STOCKMAN 48'95
PAT BLACKBIRD 190F

Cornerstone Cows in Our Herd



16P



18N



34N



40G



43P



47S



51U



53N



72S



79W



96T



111R



209U



306X



315U

Future Sires



HILITE 4088

This was our pick of the International 2020 sons from Schaff Angus Valley. He is backed by the maternal cow family, Black-cap May 8051. Hilite carries himself with true herd bull presence and boasts lots of muscle and natural thickness.

His first calves look very similar to his profile and should have his outstanding carcass qualities as well.

Hilite has seen heavy exposure this past breeding season – we are expecting 90 calves this spring of '17!!



DENSITY 72B

This is an excellent sire from the maternal breed legend, SAV Density 4336. 72B had the biggest rib eye of his calf crop. His first calf crop exhibits his proud stature and easy fleshing qualities. We look forward to watching his progeny develop.

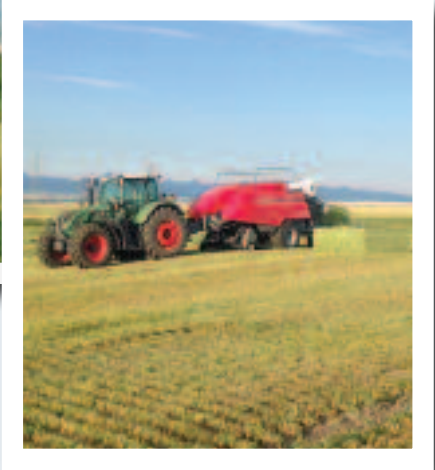
Stauffer Ranches tried to buy walking rights back on 72B from Granum Farms but they said, "No"!

CHINOOK LAKE 241B

241B was our high seller in our 2016 Bull Sale going to LLB Angus at Stettler. The Bismarck x Rush Lake mating here certainly has a lot of maternal and performance punch. He sired an excellent set of progeny on his first year out that will be a real sale feature next year!

Also, mark your calendars for the LLB Angus Spring Spectacular on March 11, 2017.





- Alfalfa VS Beef -

At Stauffer Ranches we take pride in producing a superior product. Our alfalfa production is no different where quality and delivery are number one.

Our hay market is driven by a load of our alfalfa meeting a certain criteria. Our dairy customers receive a premium product and we, as the producer, are rewarded with a premium price.

Our customers are not interested that we may have 10,000 bales of hay in inventory but, rather, whether or not we have a load of 45 bales that fit their criteria.

On the other hand, in the commercial harvesting of our beef product, it seems that the packers are much more interested in securing our 10,000 head inventory and then sorting through to find

the 45 head that fit their premium market but at a commodity price.

When the market signals for a certain quality such as marbling, a premium price is triggered. When a higher percentage of product reaches this level, it retracts from a premium back to commodity price. Therefore quality becomes a standard, not a premium.

I don't know a more resilient, hardworking group of producers than the ones in our cattle industry. Will we ever change this mind set?



Rush Lake



Hilite

Kehler Stauffer Water Safety Endowment Fund



As last November marks the 10th year since our loss of Kehler, our reflections of him by our family are still on a daily basis.

The message still being spoken through the Farm Safety Center in Raymond has had a definite and lasting impact on all age groups. Through the Grade Two Water Safety program being taught provincewide, the feedback has been very positive.

The "Kehler Stauffer Water Safety Endowment Fund" appreciates any contributions by individuals, families, businesses or corporations to help maintain further water safety education for our youth.

Respectfully,
The Stauffer Family



Contact: Charleen Davidson
Community Foundation
cdavidson@cflsa.ca



Terms & Conditions

CATTLE INSPECTION: All carry permanent identity tags corresponding to Sale Lot Numbers. All shall be available for inspection prior to sale.

ALL CATTLE ARE SOLD: Subject to such tests as required for export under regulations of the Health of Animals Branch, Department of Agriculture for Canada - those corresponding to Bureau of Animal Industry requirements.

BREEDING GUARANTEE: All cattle are sound & right and sell with a responsible breeder guarantee of satisfaction. In the event of any unlikely dispute, the regular terms and conditions, standard with the Canadian Aberdeen Angus Association shall apply.

INSURANCE: Ownership risk to purchaser commences when the Auctioneer's hammer falls. A representative from Pincher Creek Agencies will be available to look after your insurance needs on Sale Day and we strongly request you participate in one form or another to hopefully avoid any unforeseeable mishaps.

STAUFFER RANCHES RESERVES THE RIGHT to collect semen off any bull in the sale at their expense and the buyer's convenience.

TERMS OF SALE: Are cash or cheque at par, payable to Clerks of the Sale on Sale Day. U.S. Funds will be accepted at the current rate of exchange. No release will be given until satisfactory settlement has been made. We reserve the right to withhold animals from shipment for whom payments have not been received prior to departure times.

ALL PERSONS who attend the Sale do so at their own risk, and the Owners and Sale Staff assume no liability, legal or otherwise, for property loss or for any accidents that may occur.

ANNOUNCEMENTS: Errors discovered in the catalogue will be corrected by announcements from the auction stand at sale time and such corrections will take precedence over the printed material in the catalogue.

DELIVERY OF SALE BULLS: Immediately following the sale, Stauffer Ranches will provide free delivery to your ranch, up to 250 miles, and to central sale barn locations after that. With these bulls coming of two years of age, we fully expect them to adapt comfortably to your herd bull battery without too much additional care.



We appreciate the support of the
Southern Alberta Livestock
Exchange in Fort Macleod.
Ph: 403-553-3315



Merrick's Grad



Ellie Kate



CW



Lachlan

Working Stock Dogs For Sale! (immediately following the Bull Sale)



"Woodrow" is a 15 month old papered male that is showing me all the right parts to becoming a great working dog. With his good looks and keen eye he would make any rancher or cow dog trialler a great asset.

DUSTIN GONNET - 403-901-5981

- ✓ Performance Horses
 - ✓ Cutting Horse Trainer
 - ✓ Working Cow Dog Breeder & Trainer
- gonnetperformancehorses@gmail.com

"Max" is a 7 year old grade male that has been everywhere and done everything. If you have bulls that won't load or cows that won't move, this is the dog you need!



Dustin, Max & Woodrow



STAUFFER RANCHES
Box 2377, Pincher Creek, AB
TOK 1W0



STAUFFER RANCHES
TWO YEAR OLD BLACK ANGUS BULL SALE
February 9, 2017 - Fort Macleod Auction, Fort Macleod, AB